

ACADEMIC BUILDING 3RD FLOOR



1. **JOHN BIGGERS** (American, 1924–2001)
Salt Marsh, 1997
Acrylic on canvas; 120 x 324 inches



2. **RACHEL HECKER** (American, born 1958)
Tailgate, 1991
Acrylic on birch panels; 88 x 258 inches



3. **JOHN SCOTT** (American, 1940–2007)
Prayer Meeting, 1997
Aluminum and painted steel;
360 x 60 x 96 inches

ACADEMIC BUILDING 4TH FLOOR



4. **DEREK BOSHIER** (English, born 1937)
Vogue, Oswald and Lech Walesa, 1982
Oil on canvas; 88 x 117 inches

ACADEMIC BUILDING 6TH FLOOR



5. **DEREK BOSHIER** (English, born 1937)
Mysteries—New Orleans, 1983
Oil on canvas; 88 x 134 inches

ACADEMIC BUILDING 7TH FLOOR



6. **DEREK BOSHIER** (English, born 1937)
The Exhibition, 1984
Oil on canvas; 88 1/2 x 138 1/2 inches

COMMERCE STREET BUILDING 1ST FLOOR



7. **JUSTIN BERRY** (American, born 1980)
Stilt Houses, 2005
Mixed Media; 76 x 120 x 72 inches



8. **FLOYD NEWSUM, JR.** (American, born 1959)
Contemplating Success I, 2004
Acrylic on canvas; 4 paintings: 84 x 180 inches;
60 x 180 inches; 60 x 180 inches; 60 x 180 inches

COMMERCE STREET BUILDING 2ND FLOOR



9. **FLOYD NEWSUM, JR.** (American, born 1959)
Contemplating Success II, 2004
Acrylic on canvas; 4 paintings: 84 x 180 inches;
60 x 180 inches; 60 x 180 inches; 60 x 180 inches

COMMERCE STREET BUILDING 3RD FLOOR



10. **FLOYD NEWSUM, JR.** (American, born 1959)
Contemplating Success III, 2004
Acrylic on canvas; 4 paintings: 84 x 180 inches;
60 x 180 inches; 60 x 180 inches; 60 x 180 inches

COMMERCE STREET BUILDING 4TH FLOOR



11. **FLOYD NEWSUM, JR.** (American, born 1959)
Contemplating Success IV, 2004
Acrylic on canvas; 4 paintings: 84 x 180 inches;
60 x 180 inches; 60 x 180 inches; 60 x 180 inches

JESSE H. JONES STUDENT LIFE CENTER



12. **GEORGE SMITH** (American, born 1941)
Bandiagara, 1990
Painted steel; 78 x 312 x 276 inches

ONE MAIN BUILDING 3RD FLOOR



13. **JOE MANCUSO** (American, born 1954)
Nine Rugs, 1999
Terrazzo inlaid rug shapes; 108 x 1,824 inches



14. **JOE MANCUSO** (American, born 1954)
Endless Column, 2000
Scalloped concrete blocks and mortar; 95 x 40 inches

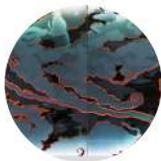


15. **JOE MANCUSO** (American, b. 1954)
Façade, 2000
Acrylic on canvas; 120 x 324 inches

ONE MAIN BUILDING 4TH FLOOR



16. **BERT LONG, JR.** (American, 1940-2013)
The Couple (Chest of Material Wealth), 1977
Acrylic on canvas; 36 x 48 in.
Acquired in 2021

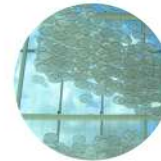


17. **BERT SAMPLES** (American, born 1955)
Manu Languidly Stirs Songs in the Grip of Shadow and Light, 2011
Glass; 55 x 188 inches



18. **VINCENT VALDEZ** (American, born 1977)
One In A Million, 2007
Oil on canvas; 33 x 56 inches

SHEA STREET BUILDING - LOBBY



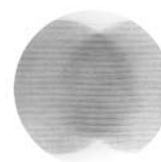
19. **JACOB HASHIMOTO** (American, born 1973)
Cloud Deck, 2010
Bamboo, rice paper, aircraft cables, lead weights;
504 x 300 x 40 inches

SHEA STREET BUILDING - 1ST FLOOR



20. **JANAKI LENNIE** (Australian, born 1956)
Provisional Space-Houston, 2007
Oil on canvas; 10 paintings, dimensions variable

WELCOME CENTER/GIRARD STREET BUILDING



21. **ADRIANA CORRAL** (American, 1983)
Impunidad, círculo vicioso [Impunity, Vicious Cycle], 2015
Ink transferred and layered onto gesso board; 48 x 96
inches with collage additions; each 22 ½ x 30 inches



22. **NANCY GRAVES** (American, 1939-1995)
Geologic Maps of Lunar Orbiter and Apollo Landing Sites portfolio, 1972
Portfolio of ten lithographs and screen-prints with
collage additions; each 22 ½ x 30 inches



23. **TRENTON DOYLE HANCOCK** (American, born 1974)
LEGENDS, 2015
Ink on acrylic, 432 x 360 inches